

Customer :

customer

Customer part :

customer part

Comment :

Comment

S1=1.99

S2=2.56

Tmax=455

Tp S2=494.0

PI=0.44

HI=125

Sample =1629.60

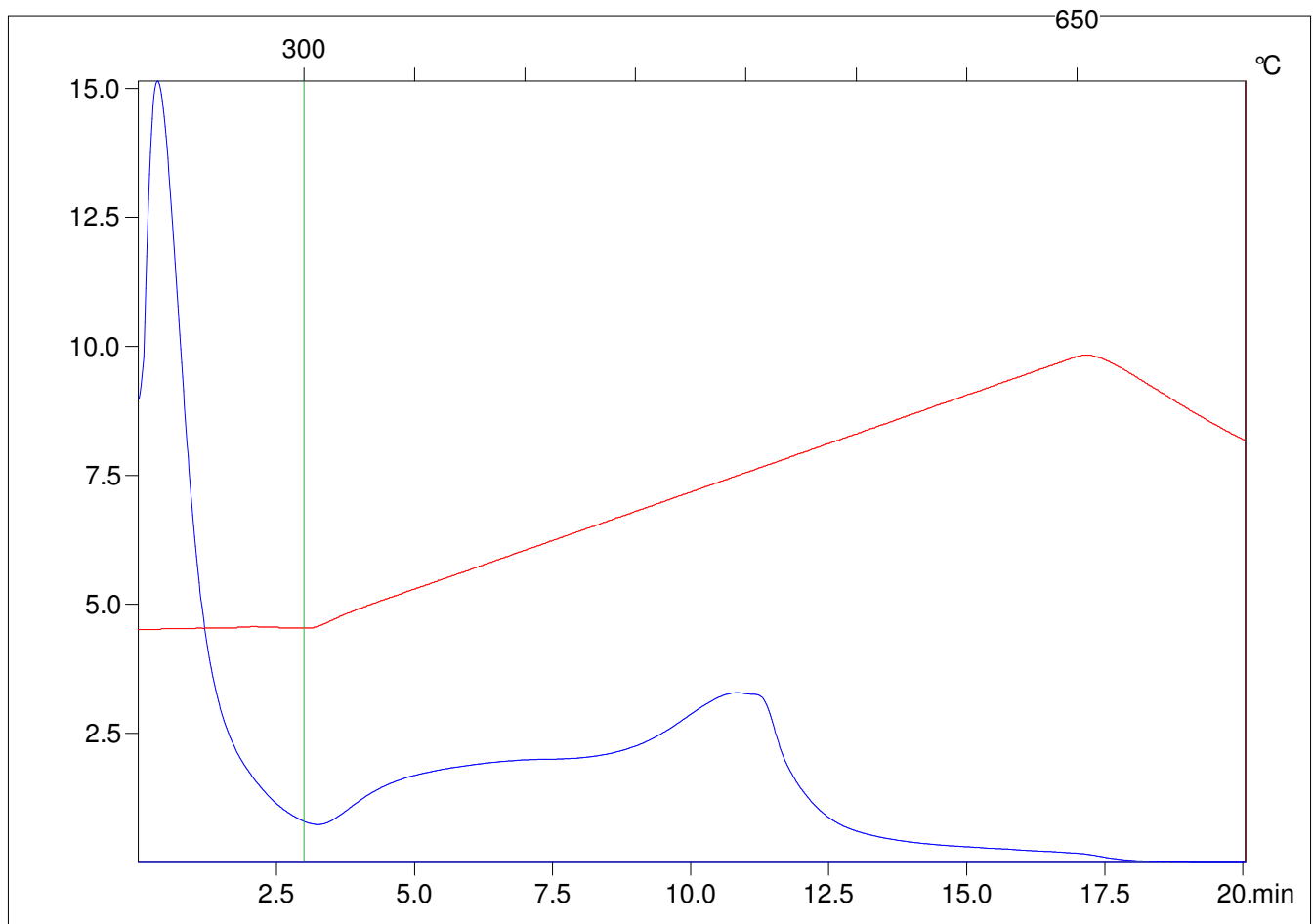
Method =Bulk Rock

Cycle=Basic

KFID(10*9)=1444

Qty =70.3

TOC=2.05



C:\VINC\PK1792\PK018.R00 : FID pyrolysis graphic

State

Pyro Status

Oxi Status